

Installing Windows Defender

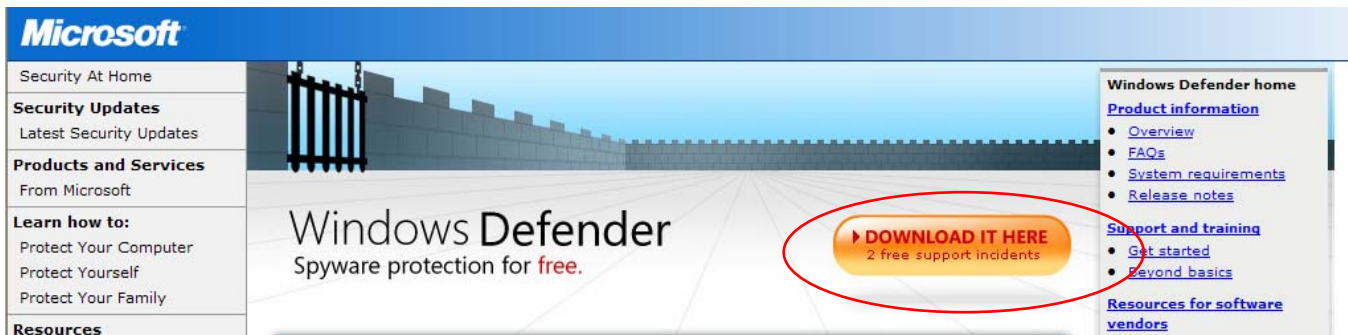
Download and Installation

On-Campus

1. If you are on-campus and connected to the network, go to the *Start* menu and select *Run*.
2. Type "\\software" in the *Open:* line (without the quotation marks) and click **OK**. Then navigate to the folder "SW Depot" then to "ftp.hamilton.edu" then to "Windows" then to "Windows XP" and then to "Windows Defender."
3. Close any programs you have open.
4. Double-click on the *WindowsDefender.msi* file and **SKIP TO STEP 8 ON PAGE 3**.

Off-Campus

1. If you are off-campus and connected to the internet, open Internet Explorer and go to: <http://www.microsoft.com/athome/security/spyware/software/default.mspx>.
2. Click on the **DOWNLOAD IT HERE** button.



3. You will need to "validate" your version of windows. To do this, click on **Continue** in the next page (figure a). A security warning box will appear. Click **Install** (figure b).

Brief Description

Windows Defender is a free program that helps you stay productive by protectir and other potentially unwanted software. Windows Defender no longer supports

On This Page

- ↓ [Quick Details](#)
- ↓ [System Requirements](#)
- ↓ [Related Resources](#)
- ↓ [Related Downloads](#)
- ↓ [Overview](#)
- ↓ [Instructions](#)
- ↓ [What Others Are Downloading](#)

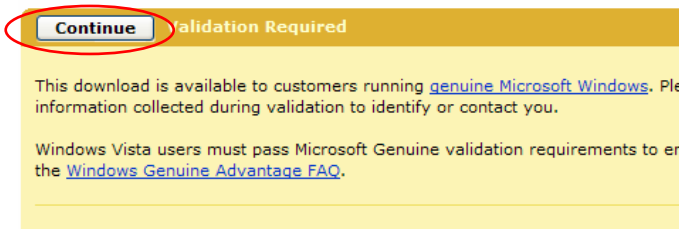


figure a

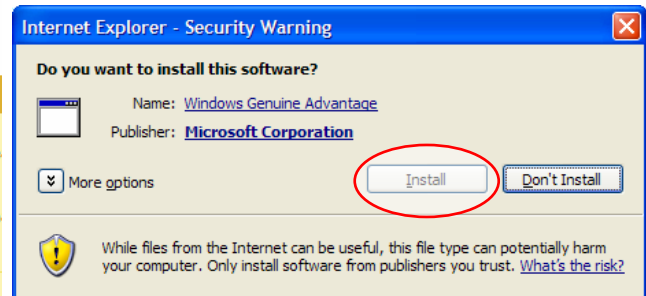
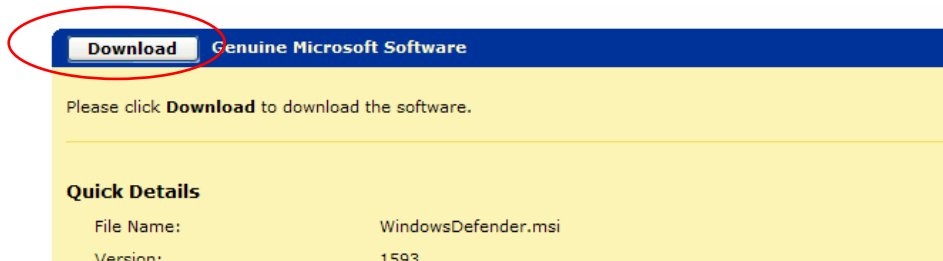
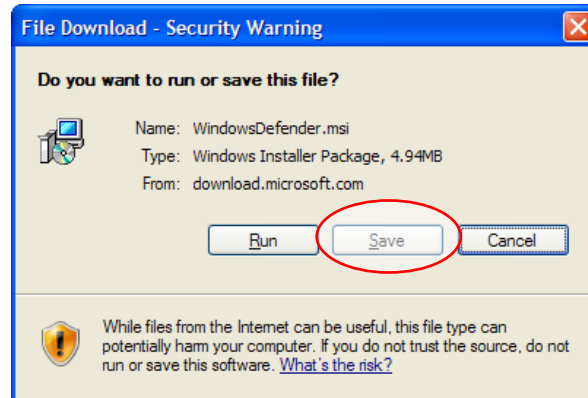


figure b

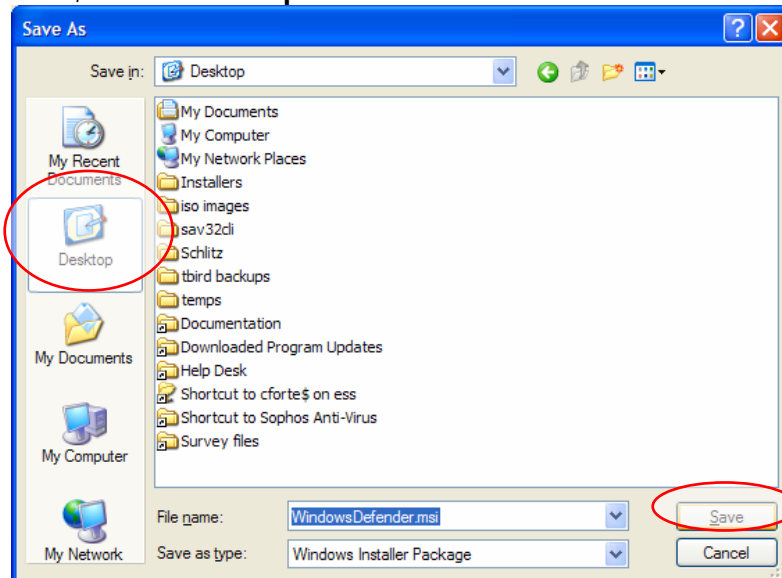
4. At the next page, click **Download** to download the software.



5. In the window that pops up, click **Save**.



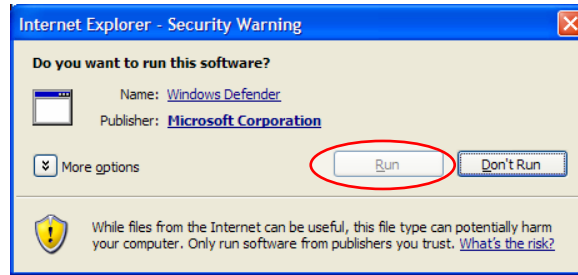
6. In the *Save As* window, select **Desktop** on the left sidebar and click **Save**.



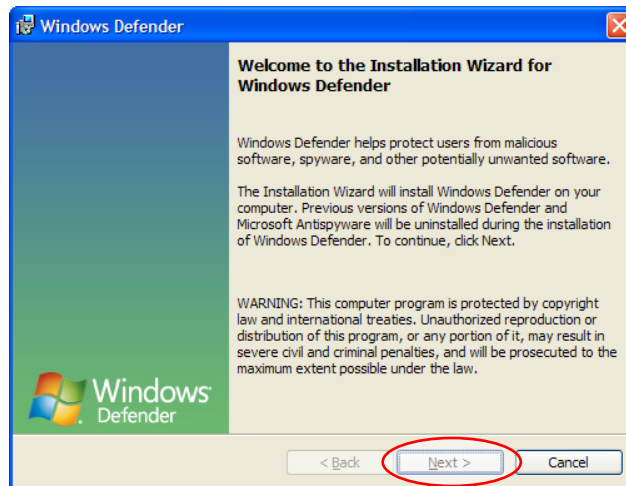
7. You will see a window showing you the download progress. When finished, either click **Run** if the download window is still open or open the *WindowsDefender.msi* file saved on the desktop.

Close Internet Explorer and any other programs you have open.

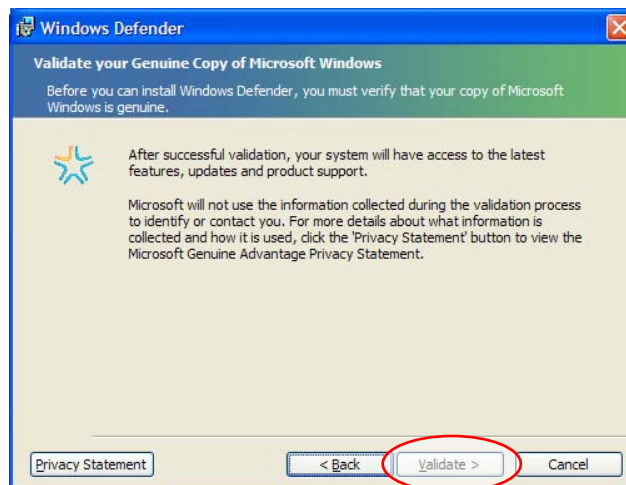
8. If you see a security warning like the one figured below, click **Run**.



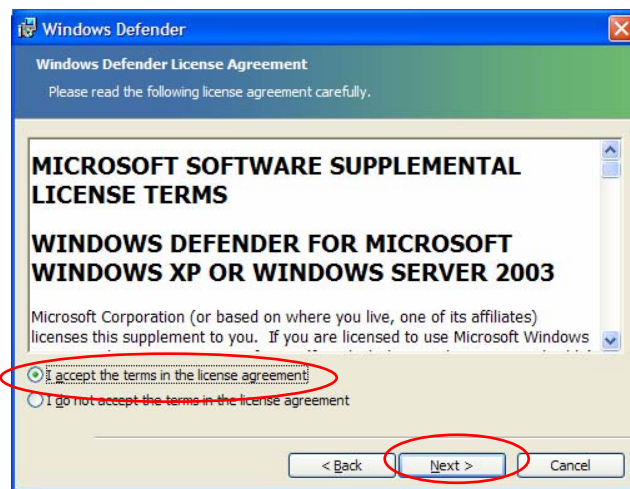
9. The *Windows Defender* installer will launch. Click **Next** on the first screen.



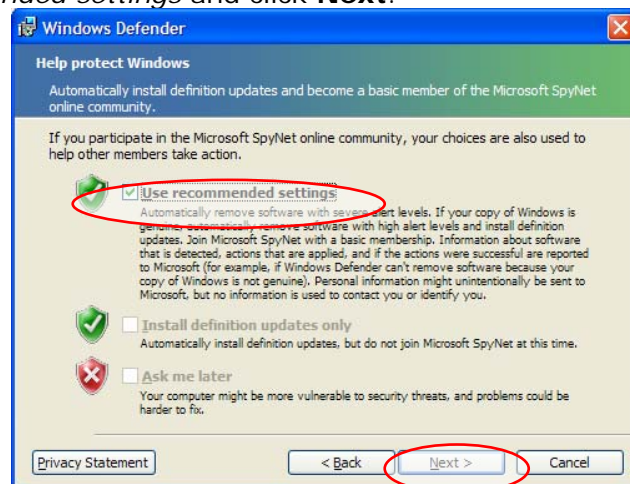
10. The Installer will ask you to validate Windows. Click **Validate**.



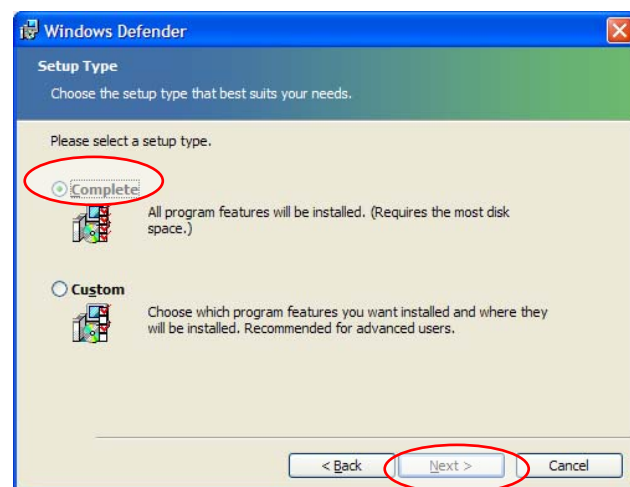
11. At the next screen, you will be asked to read the license agreement. Click the bubble next to / *accept the terms in the license agreement* and click **Next**.



12. In the next window, you will be asked to select your installation preferences. Check the top box next to *Use recommended settings* and click **Next**.

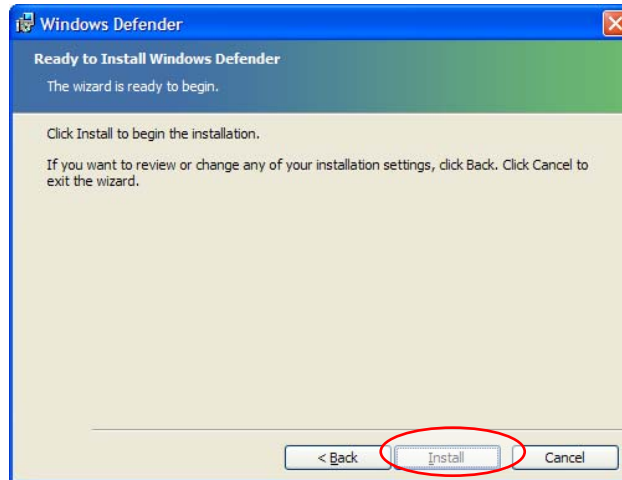


13. In the next window, select the bubble next to *Complete*. Then click **Next**.

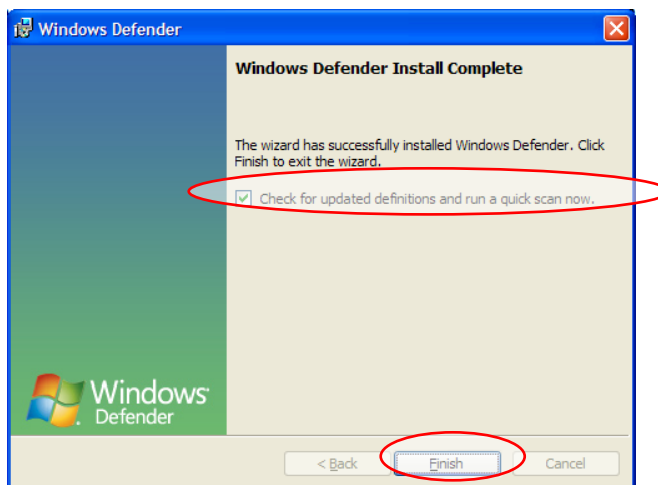


14. Click on **Install** in the next window to start the installation. A progress window will open and display the status of your installation. If you see a message box pop up regarding a program needing to close (such as DellTouch) press *Ctrl+Alt+Del*, open **Task Manager**, highlight the

application, and click **End Task**. Then close the Task Manager and click **Retry** in the installer.



15. When the installation completes, a new window will open, indicating that Windows Defender has been successfully installed. Ensure that the box next to *Check for updated definitions and run a quick scan now* is checked, and click **Finish**. This will start Windows Defender.



Windows Defender will launch and update its definitions. After it has updated it will run a quick scan of your system. Remove any malicious software that it finds and close Windows Defender after the scan completes.

For questions or comments regarding this document, please email helpdesk@hamilton.edu.