

Secure Wireless Setup – Windows XP

For Institutional Computers Connected to Hamilton’s Network

1. Go to the following Microsoft webpage and follow the directions listed there to install the Update for Windows XP (KB917021) NOTE: Restart will be required after installation:
<http://www.microsoft.com/downloads/details.aspx?FamilyID=2726f32f-d52b-4f84-ace8-f7fc20195769&DisplayLang=en>
2. After restarting, go to the **Start** menu and open **Network Connections** (if this isn't in your Start menu, go into the Control Panel and open Network Connections).
3. Right-click on the *Wireless Network Connection* and select **Properties**.
4. Open the **Wireless Networks** tab, make sure the box next to *Use Windows to configure my wireless network settings* is checked, and click the **Add** button.
NOTE: If you do not have a *Wireless Networks* tab, there's other wireless managing your wireless card. Disable that software and resume this configuration.
5. In the **Association** tab (Figure A. on next page):
 - a. Set the Network Name to **aps-hamilton**.
 - b. Check the box to *Connect even if this network is not broadcasting*.
 - c. Set *Network Authentication* to **WPA2** (if not available, select **WPA**).
 - d. Set *Data Encryption* to **AES**.
6. In the **Authentication** tab (Figure B. on next page):
 - a. Set *EAP Type* to **PEAP**.
 - b. Click on the **Properties** button.

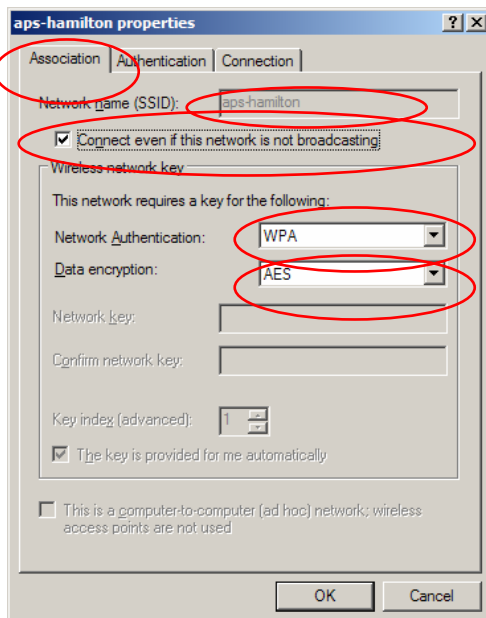
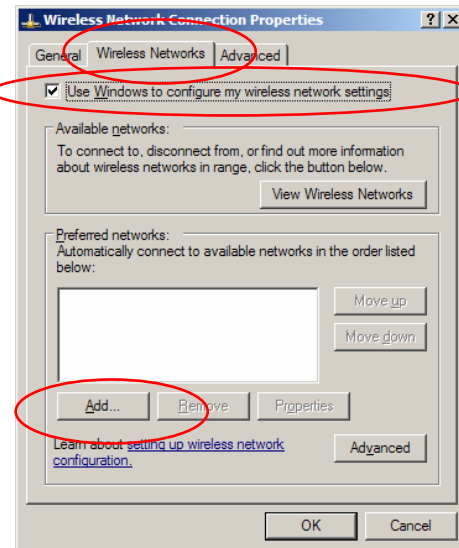


Figure A.

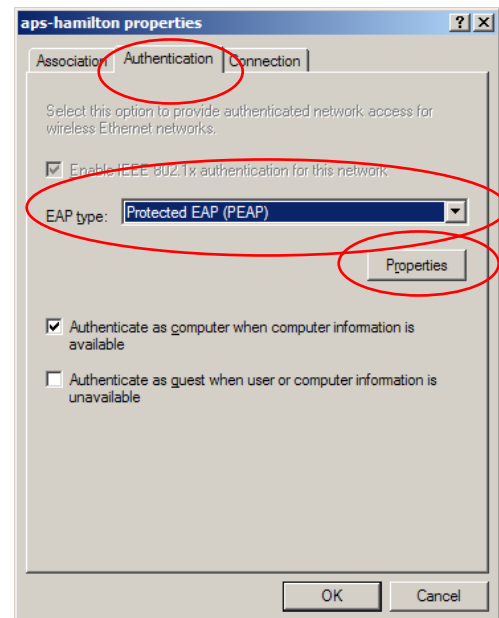
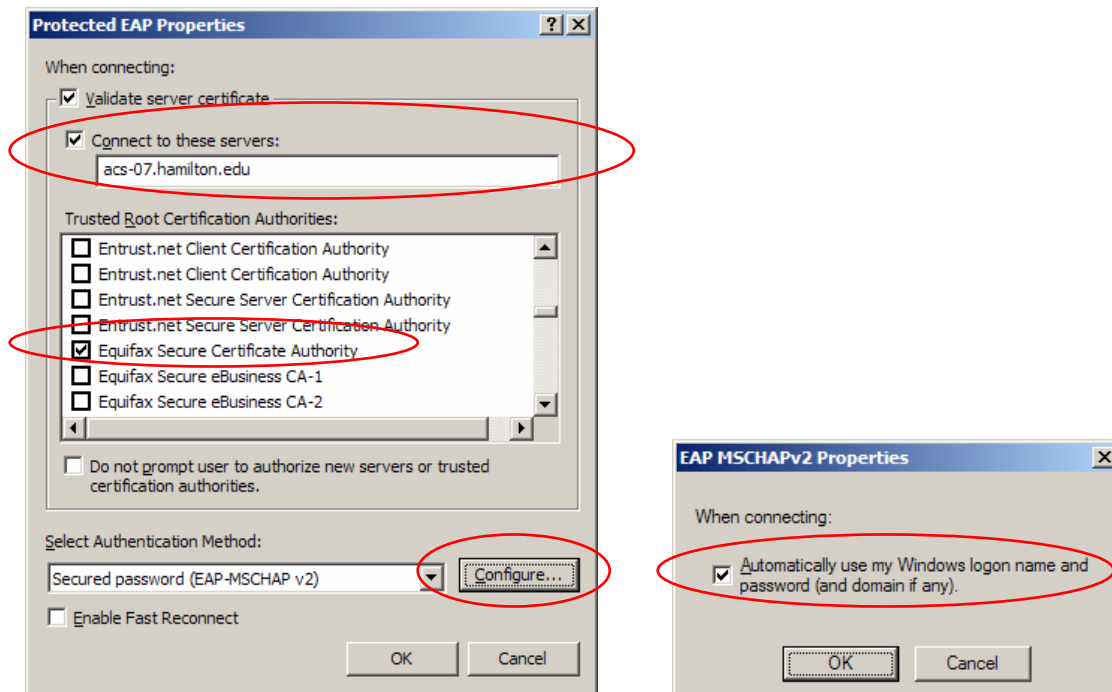
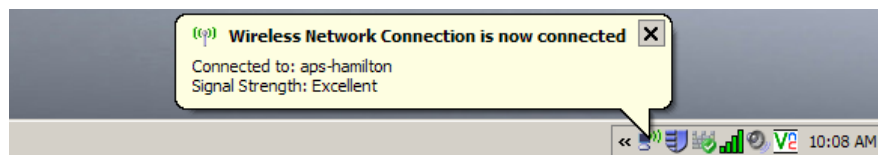


Figure B.

7. In the *Protected EAP Properties* window (figured to the right):
 - a. Check the box to *Connect to these servers* and enter **acs-07.hamilton.edu** in the field below the check box.
 - b. In the list of *Trusted Root Certification Authorities* check the box next to **Equifax Secure Certificate Authority**.
 - c. Click the **Configure** button and verify that the box to *Automatically use my Windows logon...* is checked.
8. Click **OK** to close all of the open windows.



After a minute or two, the computer should connect to the wireless network and you should see a notification message in the lower-right corner of the screen stating so. Your wireless card should connect to Hamilton's secure wireless network automatically when you are within range of the network.



For questions or comments regarding this document, please email helpdesk@hamilton.edu.