

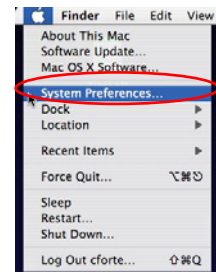
Mac OS X Software Update

What is Software Update?

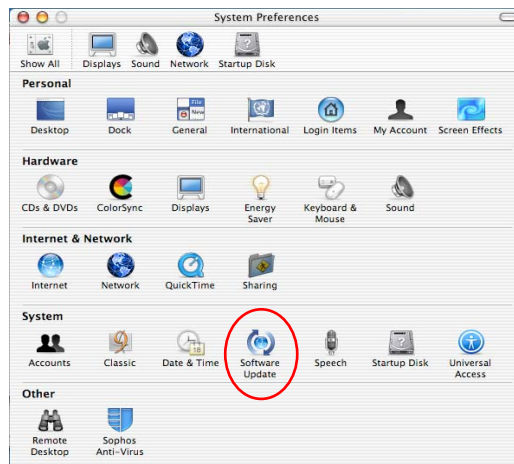
Software Update is an application in Mac OS X that is specific to the version of Mac OS X that it runs on. It accesses servers maintained by Apple, searches for updates not yet installed that are available for that operating system, downloads those updates, and installs them. Software Update deals exclusively with updates from Apple such as: operating system updates, security updates, Apple software updates (e.g. QuickTime, Safari, Java, iTunes, etc.) and firmware updates. It **does not** update any other software on the system from other software companies (e.g. MS Office, Eudora, Netscape, Adobe Reader, etc.).

Configuring Software Update to Automatically Notify You of Updates

1. Go to the **Apple** menu and select **System Preferences**.



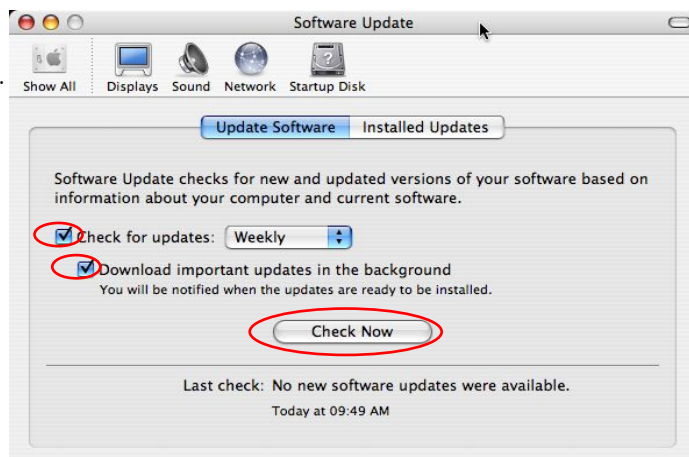
2. In the **System Preferences** window, select **Software Update**.



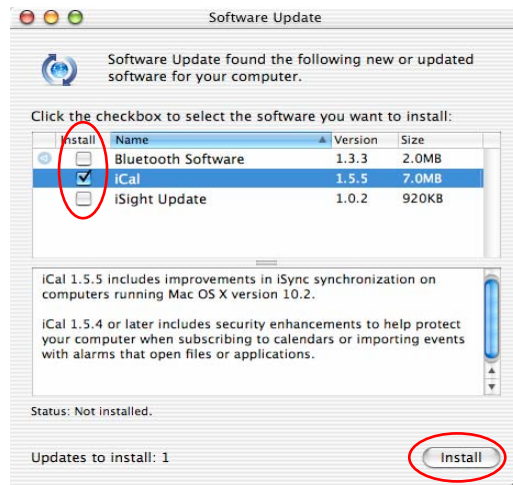
3. Check the box next to **Check for updates**.

NOTE: If you are running Mac OS X 10.3, check the box to *Download important updates in the background*. This will make the installation process much quicker when it alerts you of updates.

4. Click **Check Now**.



5. Once the **Software Updates** are found, check all of the boxes to install the updates.
6. Click **Install**.



7. You will be prompted to authenticate and accept license agreements. The password that you use to authenticate is the password you use to logon to your OS X computer. Accept all license agreements.

NOTE: If QuickTime receives a Software Update and during the installation, it asks you to register the product. Leave the registration information blank and hit **Next** or **Continue** to pass the registration page.

8. Updates will now download and install. Depending on the number of updates, this could take several minutes to complete. DO NOT attempt to install any other software while this is running. The updates will run in the background so you can do work on your computer in the mean time. A restart is often required when the installation finishes.

For questions or comments regarding this document, please e-mail: helpdesk@hamilton.edu